

# Art Knowledge Organiser - Painting

**Key question: How do I work collaboratively using lines and contours?**

## Key Vocabulary

Starting point, natural forms, viewpoints, representing, weathered surfaces, shapes, spaces, abstract shapes, brushwork, response, acetate, simple, linear, outline, contour, enlarge, stains, dyes, adapt, transpose

## Skills

- To respond to the work of artists Patrick Heron and Patrick Caulfield
- Use natural landscapes as a starting point to create own abstract painting
- To focus on line and contour in recording from direct observation
- To work collaboratively on a large scale to produce a group piece

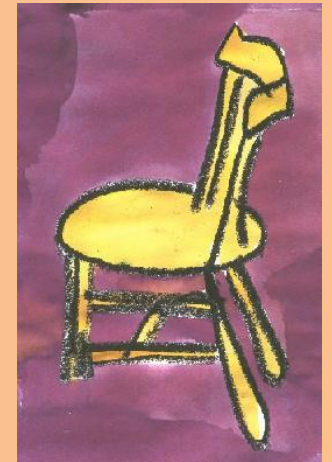
## Facts

- Patrick Heron was a British painter born in 1920.
- His work was inspired by landscapes and he was known as a leading painter of his generation.
- Patrick Caulfield is a British painter and print maker born in 1936.
- His work is mainly of everyday objects with a simple coloured background and black outlines.

## Examples



Patrick Heron



Patrick Caulfield