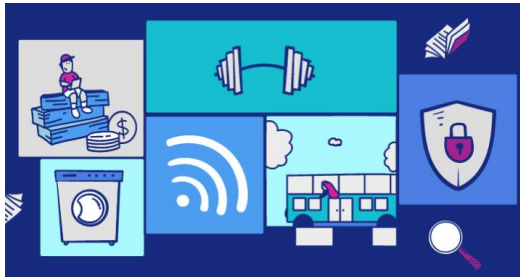


What are amenities? Can you give some examples?

Amenities are something that helps to provide comfort, convenience or enjoyment. Some examples include: Toilets, a cafe and parking



What other information will we need to consider if we want to build a bowling alley?

- Are there good transport links?
- Will there be too much litter and pollution?
- Will it create jobs for local people?
- Will it mean there will be less green space?
- What amenities will be needed (toilets, a cafe, parking)?
- Is there already enough for families to do in the local area?

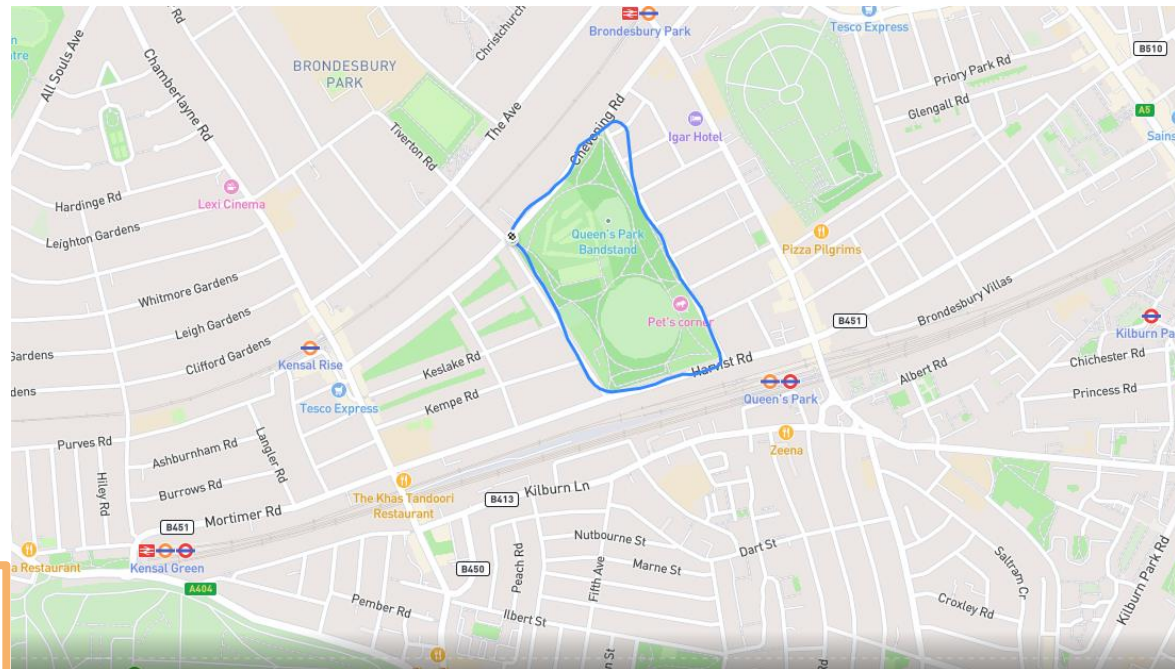


Year Three Geographical inquiry

Would Queens Park be an ideal location for a bowling alley?

What transport infrastructure is there in the local area?

The local area is very well-connected because we are in a city. Local transport includes trains, underground lines, bus routes and A roads.



Can you describe where Queens Park is located?

Queen's Park is located in North West London. It is east of our school. It is north east of the A404 (Harrow Road) which is a main road leading to the centre of London.

Key vocabulary

congestion	traffic congestion is when there are too many vehicles on the road and they move slowly
densely populated	a place where a lot of people live in a small area
infrastructure	the basic services and building work (such as roads and bridges) that are needed for a country to work well
neighbourhood	A community in a city or large town
public services	services for people to help them. For example, schools, health centres, hospitals and waste management.
residential area	an area of land that has been used mainly for housing
urban	a city or town; a built-up area where many people live