

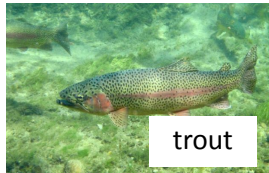


Year One Science

Animals and feeding



Test yourself: what groups could these animals belong to?
Can you explain why?



trout



cobra



newt



crocodile



penguin



turtle



chicken



elephant



bear



kangaroo

Key Knowledge - animals groups

animal	A living thing that moves and breathes	
mammal	A warm blooded animal, with a backbone, that has hair or fur. It feeds its young with milk.	Elephant, bear, sheep, hedgehog
bird	An animal that has a beak, wings and can usually fly. Birds lay eggs with hard shells.	Penguin, chicken, owl, pigeon, duck
fish	An animal with a backbone but with no arms and legs. It has gills and fins and lives in water. Fish generally lay eggs.	Trout, seahorse, cod, tuna, goldfish
amphibian	A cold blooded animal with a backbone and smooth skin. Amphibians live in water and on land. They lay eggs in a jelly-like substance in water	Newt, frog, toad
reptile	A cold blooded animal with a backbone and dry, scaly skin.. Some reptiles live in water and some live on land. Reptiles lay eggs with soft shells.	Snake, crocodile, turtle

Animal Features



gills



fin



beak



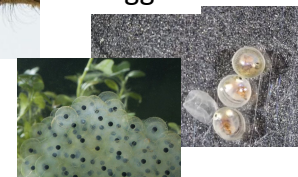
eggs



scales



wings



Key vocabulary

carnivore	An animal that eats other animals
omnivore	An animal that eats both other animals and plants
herbivore	An animal that eats plants
observe	Watching something carefully in order to learn more about it
gills	Parts of a creature on the side of its body which help it breathe in water
fins	Part of a creature's body that help them to swim in water
predator	animal which hunts or preys on other animals for food
prey	an animal that is hunted by another for food
pet	An animal trained to live with humans